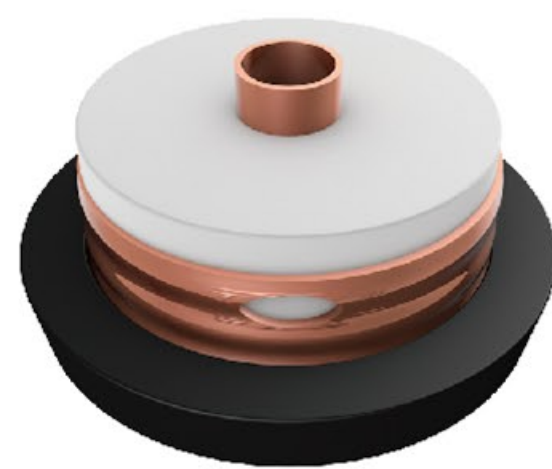
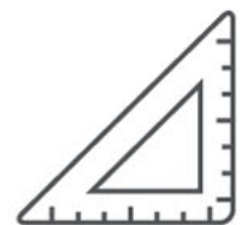


RF Coaxial Leaky Cable



Applications

- Applied typically for confined area wireless coverage



Standards Complied

- IEC 61196



Features and Benefits

- Excellent data transmitting performance
- Durable performance under different working conditions
- Customization on request



Technical Specification (Typical Type)

Series	Structure	Inner Conductor	Outer Conductor	Max. VSWR (700~2700Mhz)	Installation
1/2"	Coupling	CCA	Corrugated Copper Tube with Slots	1.3	Aerial / Tunnel
7/8"	Coupling	Copper Tube	Corrugated Copper Tube with Slots	1.3	Aerial / Tunnel

• Products can be customized, included but not limited to the above